

How to install a non-signed driver on Windows 8.x

Short Introduction

Driver signature enforcement is a security feature that makes it much more difficult to install malicious hardware drivers on the system. If a driver isn't properly signed Windows 8 won't allow users to install it.

Disabling the driver signature check may still be necessary for installing legitimate hardware drivers that aren't signed

Method

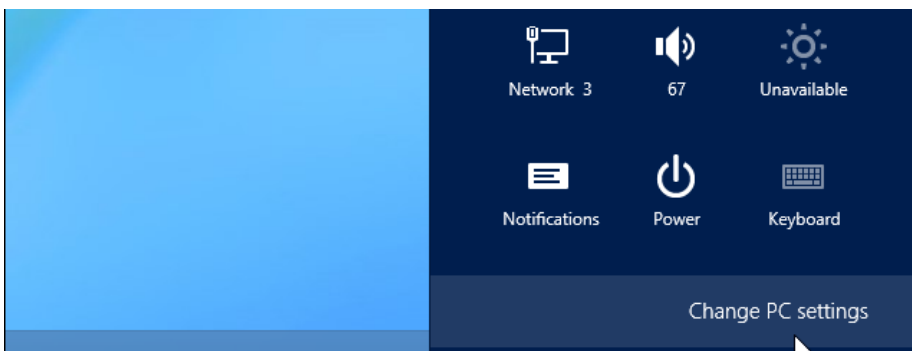
Reboot Into Advanced Startup Options

Before beginning this process, be sure to close all open programs. Your computer will reboot during this process.

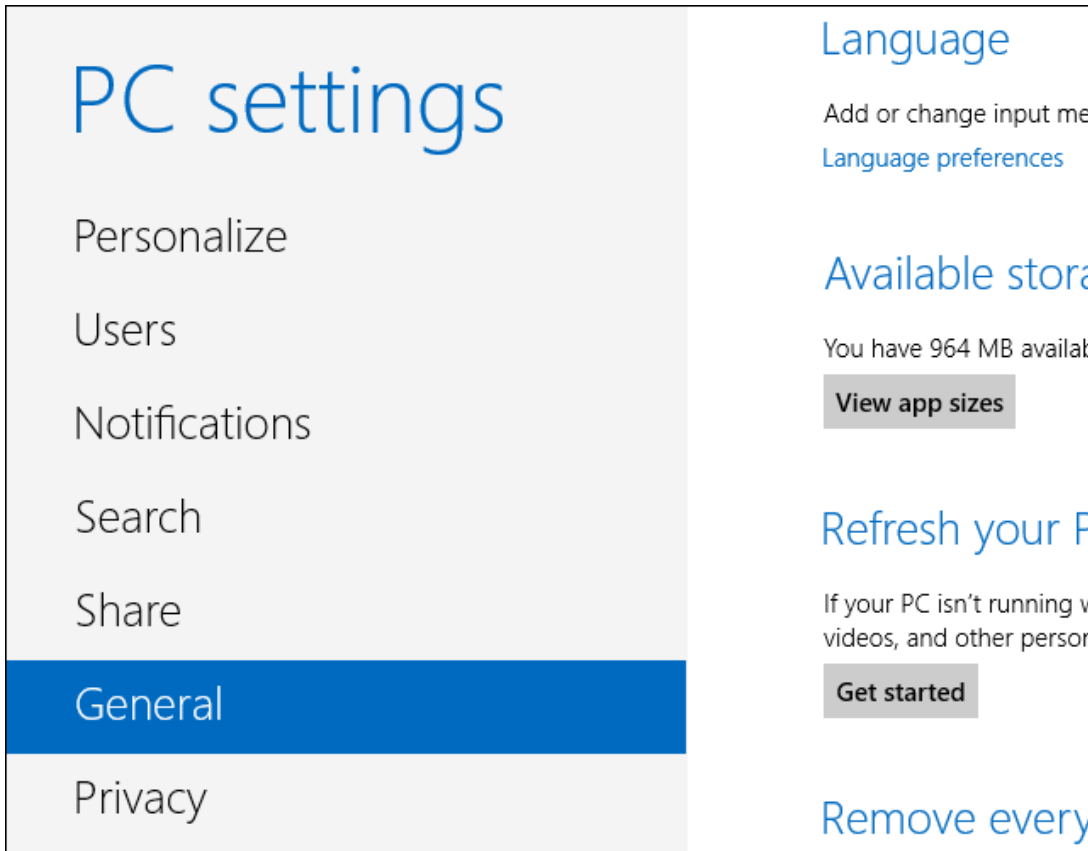
First, open the 'Settings' charm. You can do this by moving your mouse to the bottom-right corner of your screen and clicking Settings or press 'Windows Key + I' to open the 'Settings' charm directly with a keyboard shortcut.



Select the 'Change PC settings' option at the bottom of the 'Settings' charm.



In the 'PC settings' app, select the 'General' category.



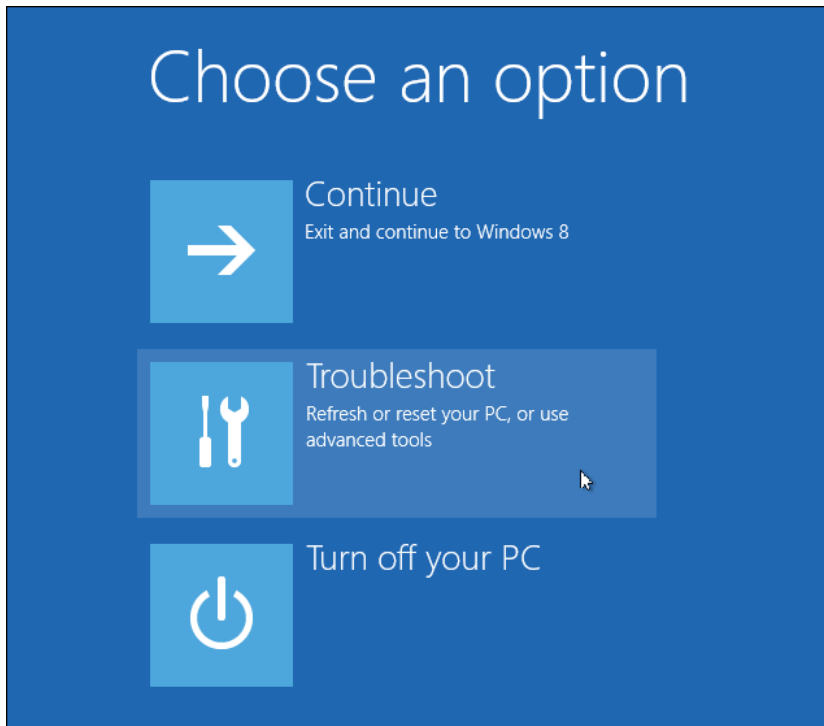
Scroll down and click the 'Restart now' - button under 'Advanced startup'. Your computer will reboot.

Note that you can also hold the 'Shift' - key while clicking the 'Restart' option on the Settings charm to immediately reboot your computer and bring up the 'Advanced startup' options.

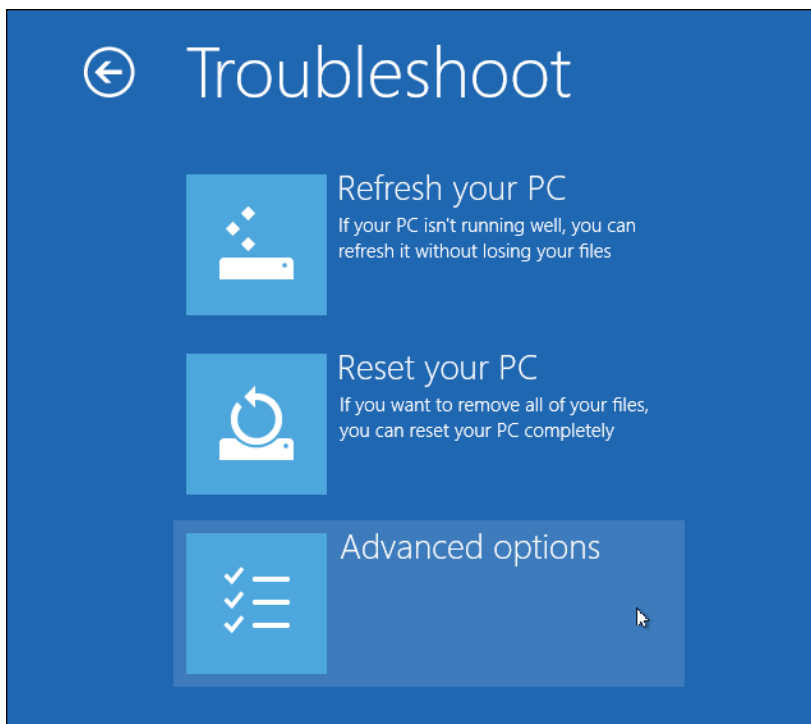


Access Startup Settings

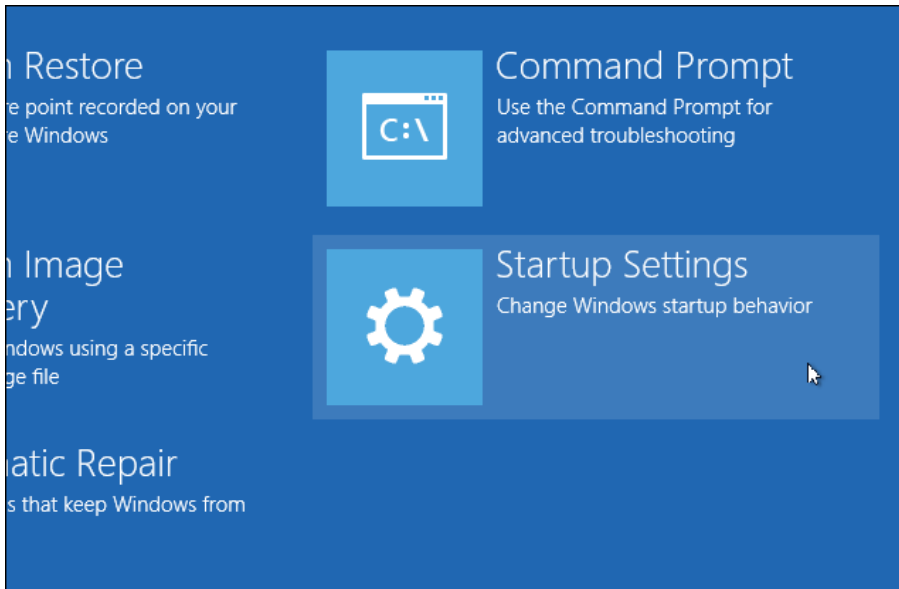
When the 'Choose an option' screen appears, click the 'Troubleshoot' tile.



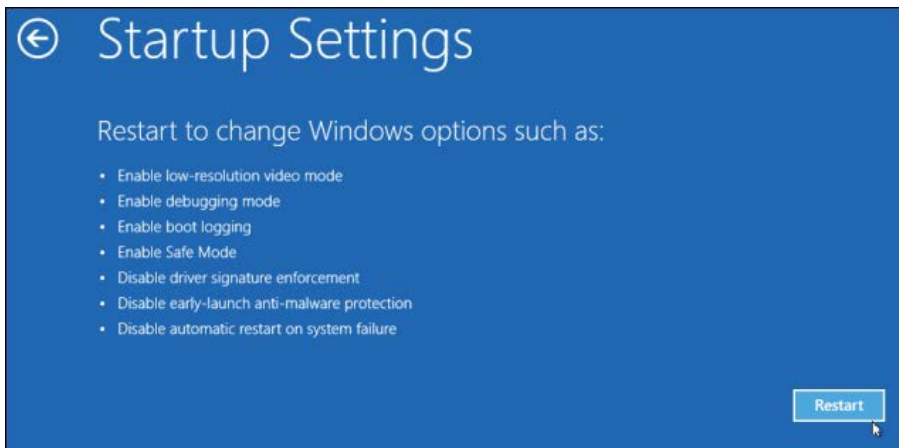
Next, click or tap the 'Advanced options' tile.



Select the 'Startup Settings' tile on the 'Advanced options' screen.

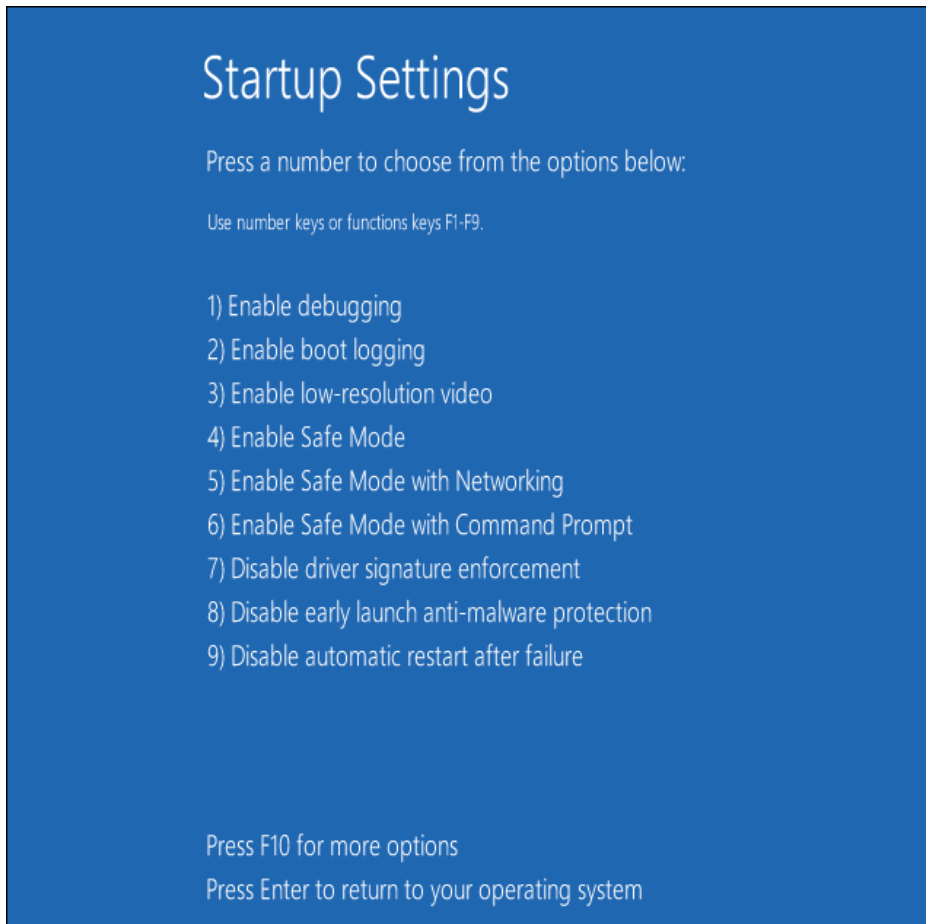


Click the 'Restart' - button on the 'Startup Settings' screen to reboot your computer again.



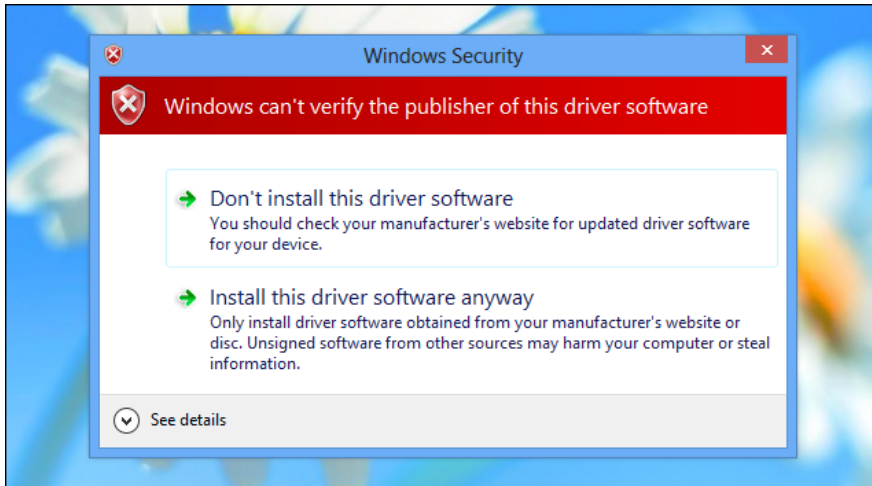
Disable Driver Signature Enforcement

On the Startup Settings screen, tap the F7 or 7 key on your keyboard to select the 'Disable driver signature enforcement' option.



Windows 8 will immediately boot to its lock screen. Sign into Windows 8 as you normally would — everything will look the same, except Windows will no longer demand driver signatures until you next reboot.

You can now install unsigned drivers as you would on previous versions of Windows. Windows will alert you if you try to install a driver that isn't properly signed, but you'll see an "Install this driver software anyway" option you can choose.



Reboot

When you're done installing the unsigned drivers, reboot your computer. Windows will keep using any unsigned drivers you've already loaded, even as it enforces signature requirements for new drivers.