

FS-9130DN

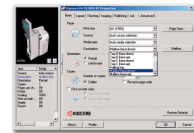
► print ► copy ► scan ► fax

A3 MONOCHROME DEPARTMENTAL PRINTER

READY TO TAKE CARE OF ANY WORKLOAD.

With a print speed of 40 pages per minute in A4, the Kyocera FS-9130DN is ready to carry you through the heaviest of loads without slowing down. Fast, efficient and reliable, this printer also has a highly functional modular design. The paper and finishing options make it easy to fit the printer to your department's precise needs.

- 40 pages per minute in A4, 23 pages per minute in A3
- 64MB memory standard, upgradeable to 576MB
- Duplex and network connectivity as standard
- PDF direct printing from USB Flash Memory devices
- Wide range of paper options
- Long-life components and easy maintenance



Easy network access for the entire office is standard. The Kyocera KX Driver works behind the scenes to ensure uncomplicated handling.

This printer has the capacity to work fast. Space for an input of 1,200 sheets and for 500 sheets of printouts are standard.



FS-9130DN

A3 MONOCHROME DEPARTMENTAL PRINTER



ECOSYS devices are designed to minimise both direct costs and indirect costs such as maintenance, administration and consumables. The cartridge-free system requires only the toner to be replaced. The modular design concept allows you to add workflow enhancing functions and a wide variety of paper handling capabilities as required. Integrated system software provides long-term cross-network compatibility. Kyocera's long-life components cost you and the environment less.

GENERAL

Technology: Kyocera ECOSYS, Laser
Engine speed: Max. 40/23 pages per minute A4/A3 simplex, max. 33/16 pages (16/8 sheets) per minute A4/A3 duplex
Resolution: 1,200 dpi quality (1,800 x 600)
Time to first page: 3.5 seconds
Warm-up time: 60 seconds from power on
Duty cycle: Max. 200,000 pages per month, max. average 55,000 pages per month
Power source: AC 220 ~ 240 V, 50/60 Hz
Power consumption: Printing: 710 W, Stand-by: 160 W, Power-Saving (ECOpower): 4.5 W
Noise (ISO 7779): Printing: 51 dB(A), Stand-by: 37 dB(A), Power-Saving (ECOpower): immeasurably low
Dimensions (W x D x H): 599 x 646 x 615 mm
Weight: Main unit: Approx. 68 kg
Certifications: TÜV/GS, CE, PTS
This product is manufactured according to ISO 9001 quality standard and ISO 14001 environmental standard.

PAPER HANDLING

All mentioned paper quoted are based on a paper thickness of max. 0.11 mm. Please use paper recommended by Kyocera under normal environmental condition.

Input capacity: 2 x 500-sheet universal paper cassette, 60-105g/m², A3, A4, A4R, A5R, B4, B5, B5R, Letter, Letter-R, Legal, Ledger, Folio, STMT
200-sheet multi-purpose cassette, 45-200g/m², A3-A6R, Custom (88 x 148 mm to 297 x 450 mm)
Max. input capacity with optional paper feeder PF-750: 4,200 sheets
Duplex as standard supports A3, A4, A4R, A5R, B4, B5, B5R, Letter, Letter-R, Legal, Ledger, 60-80g/m²
Output capacity: 500 sheets face-down

CONTROLLER

Processor: PowerPC 750FL / 600MHz
Memory: Standard 64MB + ECOMemory, max. 576MB (1 DIMM slot)
Emulations: PCL6/PCL5e incl. P1L, PostScript 3™ (KPD L 3), KC-GL (HP-7550A), PDF direct printing, automatic emulation sensing (AES), Line Printer, IBM Proprinter X24E, Epson LQ-850, Diablo 630
Controller language: PRESCRIBE IIe
Fonts: 80 outline fonts (PCL), 136 PostScript Fonts, 1 bitmap font, 45 types of one-dimensional barcodes plus two-dimensional barcode PDF-417
Downloadable fonts: Kyocera, PCL + TrueType format, Type 1 + 3 format
Print features: eMPS – job management functionality with optional hard disk HD-5 for quick copy, proof and hold, private print and job storage
100 department codes for Accounting, PDF direct printing via USB Flash memory device, professional finishing capabilities

Your Kyocera Business Partner:

System platform:

The FS-9130DN offers USB, parallel and network connectivity as standard and delivers problem-free system administration. Kyocera's single platform technology means that the same driver can be used for every Kyocera PCL/PostScript print device on the network: from single-user desktop printers to high-end multifunctional systems. Only Kyocera offers this effortless combination of IT sophistication and high-performance paper handling expertise.

PRESCRIBE IIe:

With the Kyocera page design and control language PRESCRIBE IIe, even complex graphics, logos and forms (even multipart forms) can be created independently of the system and saved and updated in the printer. Consequently, integration into print files no longer applies. They are only accessed as required and therefore relieve the load on the network.

KM-NET for Client/KM-NET Viewer:

The settings of all printers on the network can be checked visually and amended from any Windows PC. KM-NET for Client enables easy setup and check of the printer status via parallel, USB and network connection. KM-Net Viewer is an advanced print management software tool using the standardised protocol SNMP.

INTERFACE

Standard interface: Fast Ethernet 10/100Base-TX, High speed bi-directional parallel (IEEE 1284), USB 2.0 (Hi-Speed), USB Host Interface dedicated for USB Flash Memory device, KUJO-LV option interface slot
Multiple interface connection (MIC): Allows simultaneous data transfer via up to four interfaces, with each interface having its own virtual printer.

OPTIONS

Paper handling

PF-700 Paper feeder: 2 x 500 sheets, 60-105g/m², A3, A4, A4R, A5R, B4, B5, B5R, Letter, Letter-R, Legal, Ledger, Folio, STMT

PF-750 Paper feeder: Max. 3,000 sheets, 60-105g/m², A4, B5, Letter

DF-710 Document finisher + AK-705*:

Main tray: Max. 3,000 sheets A4 or 1,500 sheets A3 face-down, 60-200g/m², A3-B5,
Sub tray left: Max. 200 sheets A4 or 100 sheets A3/B4 face-up, 45-200g/m², A3-A6R,
Sub tray right: Max. 50 sheets A4 face-up, 45-200g/m², A4-A6R,
Stapling: Max. 50 sheets A4 or 30 sheets A3, stapling at 3 positions

BF-710 Booklet unit for DF-710: Max. 64 pages (16 sheets) booklet folding and stapling, 60-80 g/m², cover sheet 60-200g/m², A3, B4, A4R

PH-5C/PH-5D Punch unit for DF-710: A3-A5R, 45-200g/m², 2-hole/4-hole/Swedish type

MT-710 Mailbox for DF-710: 7 bins, 60-80g/m², A3-A5R, 7 bins x 100 sheets A4 or 50 sheets A3/B4

DF-730 Document finisher + AK-705*: Max. 1,000 sheets A4 or 500 sheets A3/B4, 64-128g/m², A3-B5, one position stapling max. 30 sheets A4 or 20 sheets A3/B4, 64-80g/m²

CB-700 Cabinet (W x D x H): wooden desk with storage capacity

CB-710 Cabinet (W x D x H): metal desk with storage capacity

*Adapter-Kit AK-705 is required for the use of DF-710/DF-730 document finisher.

The use of the hard disk HD-5 or extended RAM-Disk size is highly recommended to achieve full document finisher functionality.

Memory

Printer memory: 1 DDR SDRAM DIMM slot (64, 128, 256 or 512MB)

CompactFlash® card: 1 slot (up to 2GB), forms, fonts, logos, macro storage

HD-5 Hard disk: 40GB, storage of data, forms, fonts and job management

Data security kit C: Overwrite and encryption of HD-5

USB Flash Memory: Supports PDF direct printing via USB Host Interface

Optional interface

IB-23 Network card: 10Base-T/100Base-TX

IB-11 Serial interface: RS-232C serial interface

PS159: Wireless LAN (802.11b/g)

PS1109 Gigabit Ethernet:

10BaseT / 100BaseTX / 1000BaseT (RJ-45)

PS129 Fibre Optic: 100BaseSX (SC)

PS1129 Gigabit Fibre Optic: 1000BaseSX (SC)

CONSUMABLES

TK-710 Toner-kit: Microfine toner for 40,000 pages in accordance with ISO/IEC 19752

Capacity of starter toner is 20,000 pages in accordance with ISO/IEC 19752

MAINTENANCE

MK-710 Maintenance-kit: 500,000 pages

WARRANTY

2-year warranty as standard. Kyocera guarantees the drum and developer for 3-year or 500,000 pages (whichever occurs sooner), provided each printer is used and cleaned in accordance with the service instructions.

KYO LIFE

The up to 5-year on-site warranty extension for printer and options. The warranty is limited to 2 million pages (3 million pages with KYOLife).



Select your options to suit your needs:

Document finisher (DF-730)



Paper feeder (PF-700)

Product depicted includes optional extras

KYOCERA MITA Europe B.V., Hoeksteen 40, 2132 MS Hoofddorp, The Netherlands, Tel +31 (0) 206540000, Fax +31 (0) 206531256, www.kyoceramita-europe.com, info@kyoceramita-europe.com
KYOCERA MITA Corporation, 2-28, 1-Chome, Tamatsukuri, Chuo-Ku, Osaka 540-8585, Japan, www.kyoceramita.com

Kyocera does not warrant that any specifications mentioned will be error-free. Specifications are subject to change without notice. Information is correct at time of going to press. All other brand and product names may be registered trademarks or trademarks of their respective holders and are hereby acknowledged.

